

HEIOTHERA

OUT OF THE STORM AND INTO THE CALM [平穩]

A NOVEL APPROACH TO TREATING AUTOIMMUNE DISEASE

ENGINEERED CYTOKINES TO TAME INFLAMMATION

EXPERIENCED FOUNDING TEAM



JEFFREY A HUBBELL, PHD

Eugene Bell Professor, Tissue Engineering and Deputy Dean for Development

Pritzker School of Molecular Engineering
University of Chicago



JUN ISHIHARA, PHD

Lecturer at Imperial College London

Visiting Position Pritzker School of Molecular Engineering, University of Chicago



CARLO PASSERI

Entrepreneur & Biotech Investor



\$160M VC, Celgene partnership



Acquired, Genzyme



Listed on SIX Exchange



\$6M seed



\$7M seed



AKO ISHIHARA, MD, PHD

Co-founder Arrow Immune
Postdoctoral Fellow

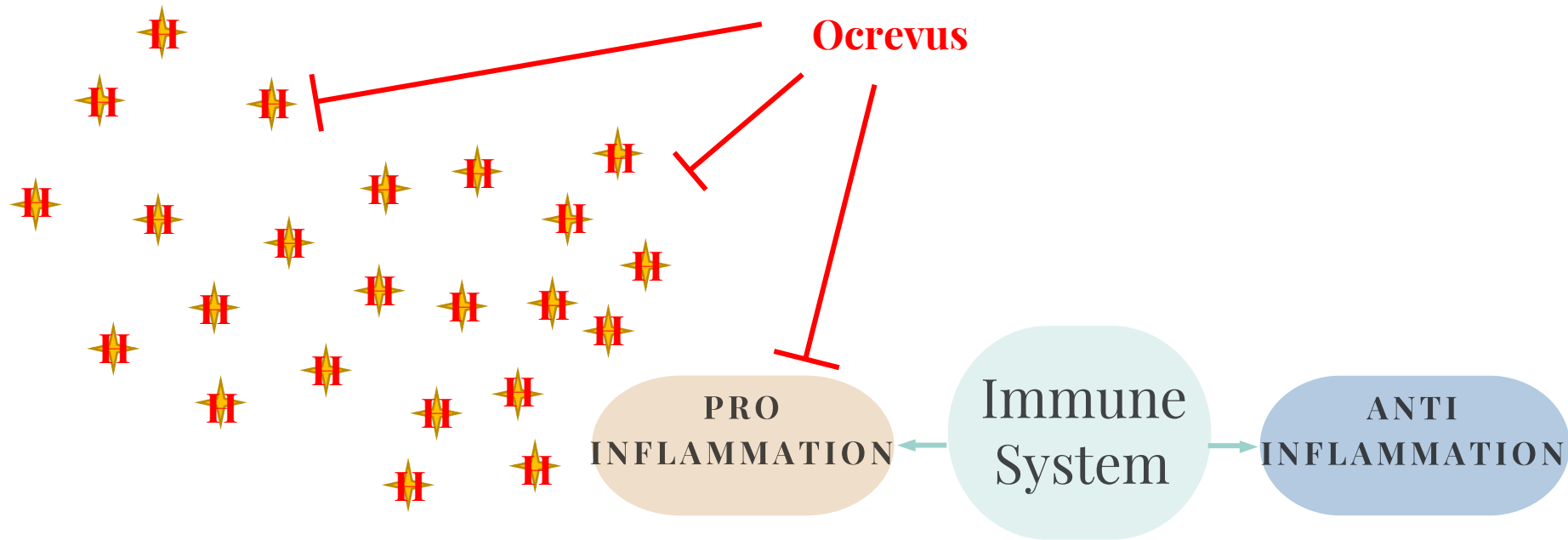


\$700M



CURRENT TREATMENTS HAVE SERIOUS SIDE EFFECTS

Current Treatments Suppress the Entire Immune System with Negative Side Effects

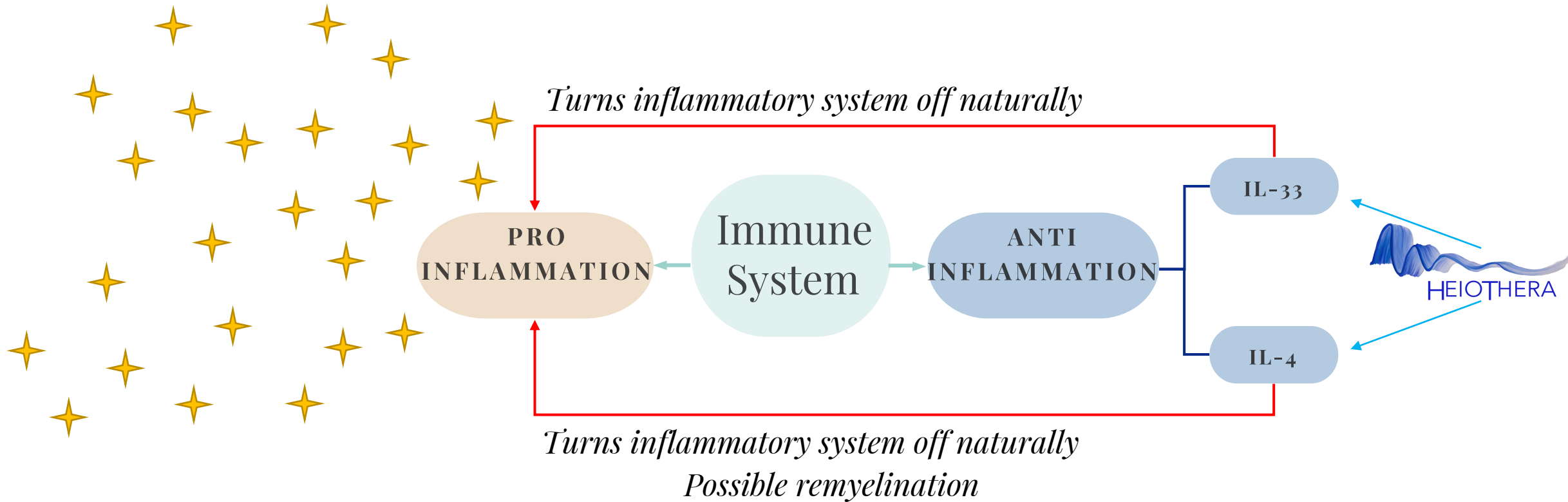


SIDE EFFECTS

- Liver problems
- Kidney problems
- Severe infections
- Hep. B reactivation
- Severe skin reactions
- Low white blood cells
- Progressive multifocal leukoencephalopathy

HEIOTHERA'S APPROACH IS UNIQUE

HeioThera Leverages the Body's Natural Systems to Calm the Autoimmune Response





A NEW APPROACH TO TREATING AUTOIMMUNE DISEASE

HeioThera Targets the Lymph Nodes & Induce Tolerogenic Response

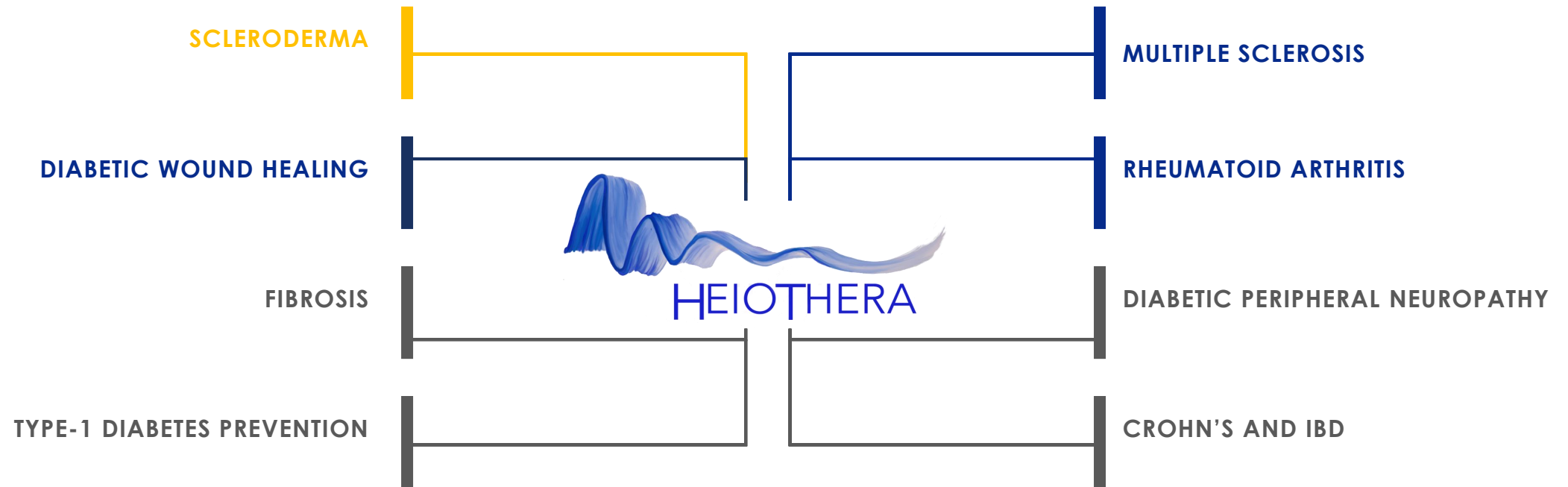
- **Target accumulation in the lymph nodes** throughout the body by approx. 20-fold
- Via **interaction with FcRn** in the lymph nodes

Combine with anti-inflammatory cytokines to treat specific autoimmune diseases

HeioThera shapes the immune response by tilting it towards tolerance

HEIOTHERA'S PLATFORM POTENTIAL

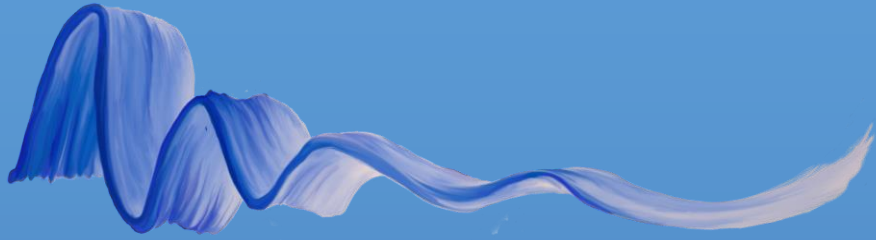
More Than One Indication, More Than One Cytokine



● PARTIAL PROOF OF CONCEPT
EXPERIMENTS UNDERWAY

● ANIMAL MODELS PLANNED

● PROOF OF CONCEPT ESTABLISHED
W/ MECHANISM OF ACTION



HEIOTHERA

CONTACT

CARLO@HEIOTHERA.COM



JUN@HEIOTHERA.COM



JEFF@HEIOTHERA.COM